

# MONTHLY MEMBERSHIP PROGRESS REPORT

LOCATION INDIA

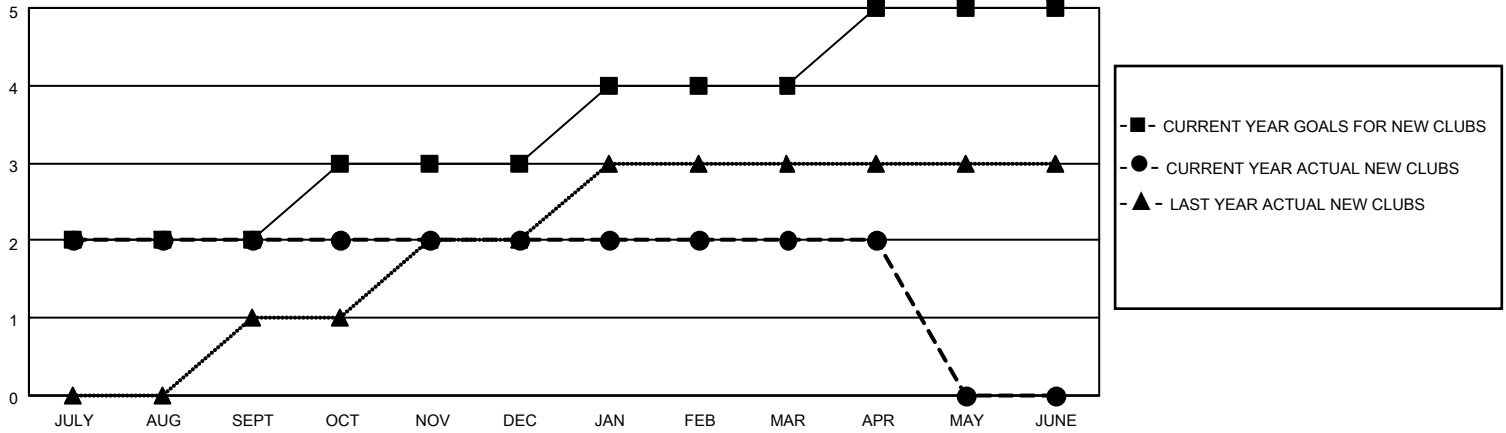
District 316 B

Results as of: 4/30/2021

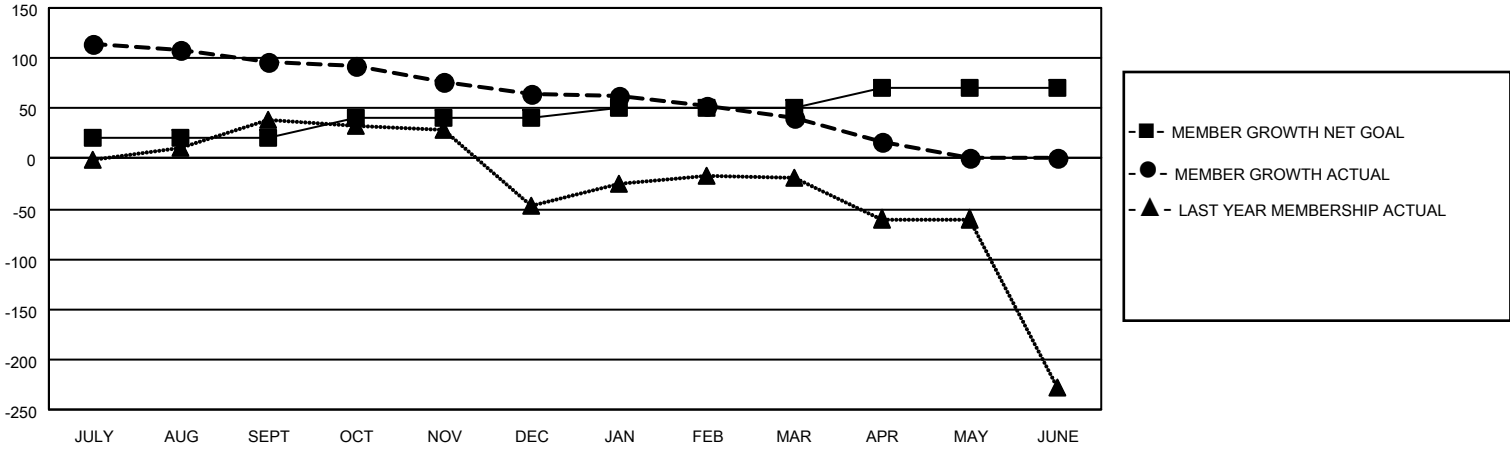
Clubs			
RESULTS FOR 2020-2021			
QUARTER	NEW CLUB GOAL	NEW CLUBS	DROPPED CLUBS
JULY/AUG/SEPT	2	2	0
OCT/NOV/DEC	1	0	0
JAN/FEB/MAR	1	0	4
APR/MAY/JUNE	1	0	0

Members			
RESULTS FOR 2020-2021			
QUARTER	MEMBER GROWTH NET GOAL	MEMBER GROWTH ACTUAL	DROPPED MEMBERS ACTUAL (including transfers)
JULY/AUG/SEPT	20	129	29
OCT/NOV/DEC	20	36	65
JAN/FEB/MAR	10	10	31
APR/MAY/JUNE	20	18	39

**GOALS AND ACTUAL NEW CLUBS CUMULATIVE**



**GOALS AND ACTUAL MEMBERS CUMULATIVE**



**DROPPED CLUBS: 4**

24 CLUBS OF 60 ADDED 1 OR MORE NEW MEMBERS

**GENDER DISTRIBUTION**

MALE 1,220 (75.64%)  
FEMALE 393 (24.36%)

**DROPPED MEMBERS**

[CLICK HERE FOR CUMULATIVE MEMBERSHIP DATA](#)

DECEASED	25
CLUB CANCELLED	16
OTHER	123
<b>TOTAL</b>	<b>164</b>

TOTAL FAMILY UNIT MEMBERS	518
FAMILY MEMBERS PAYING HALF DUES	296